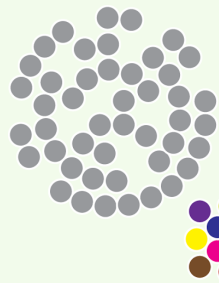
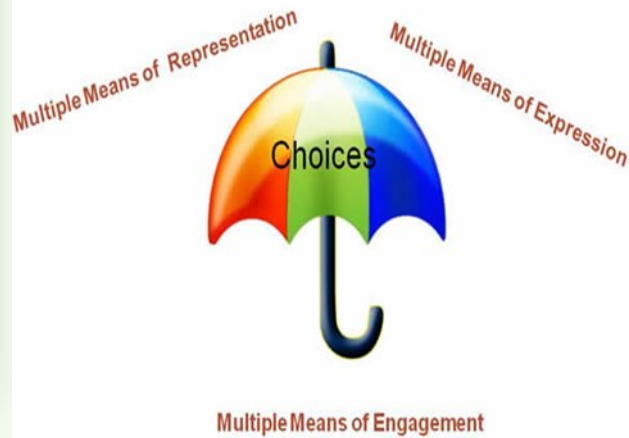




Universal Design for Learning



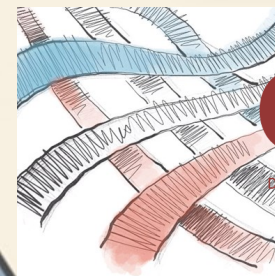
Separation



Integration



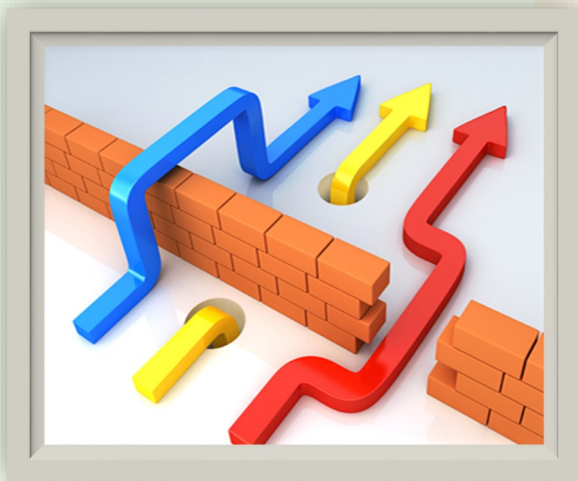
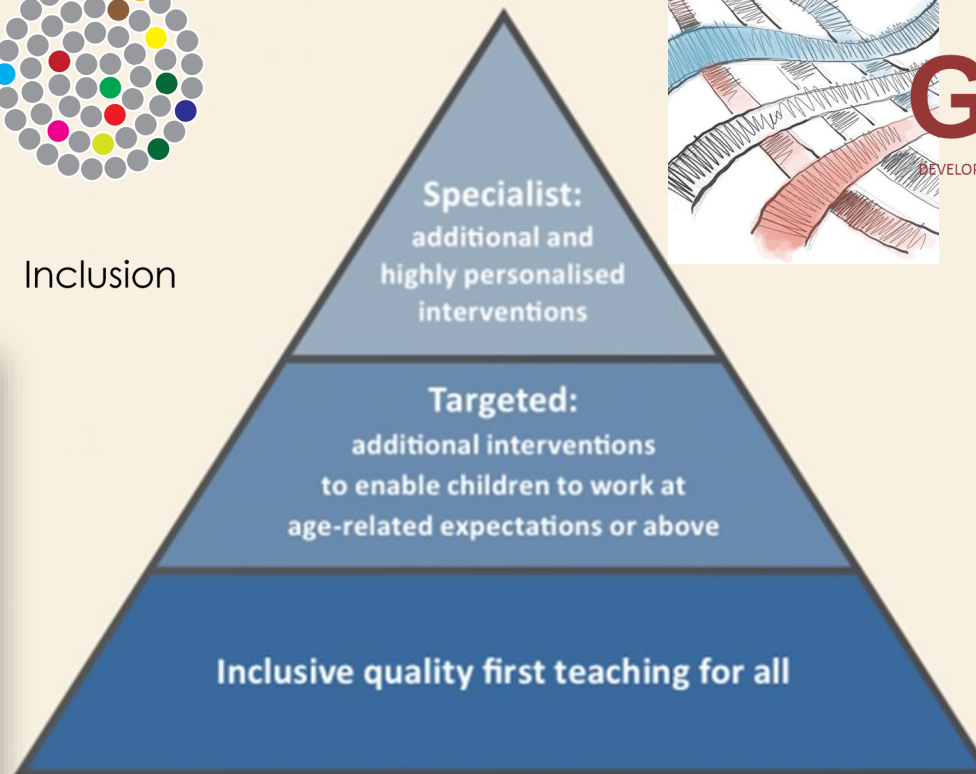
Inclusion



GOPRINCE

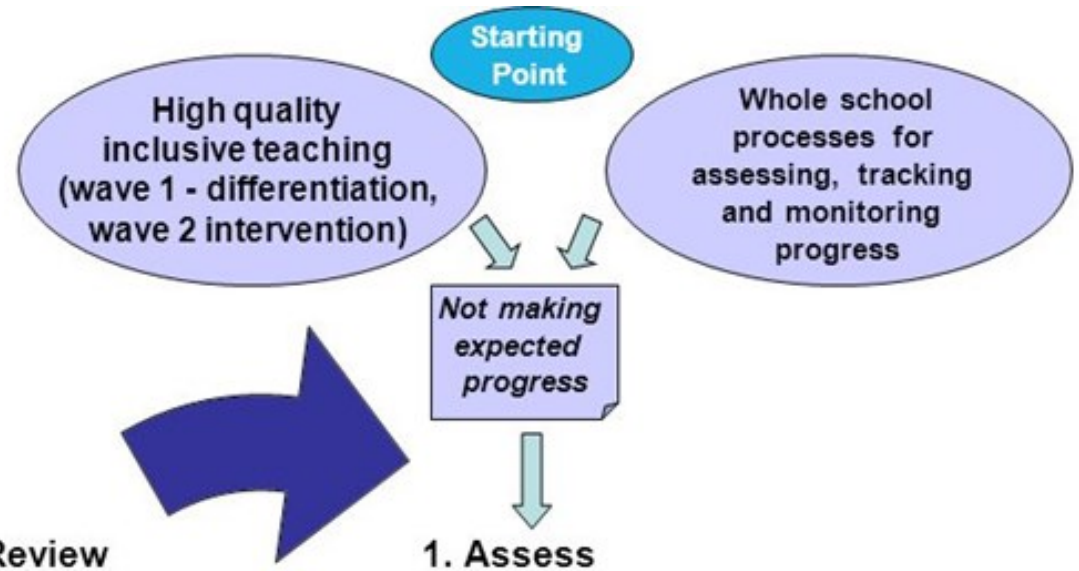
DEVELOPING GOOD PRACTICES : INCLUSIVE EDUCATION IN EARLY CHILDHOOD

<http://www.goprince.eu/>



- Fully included or integrated?
- Quality First Teaching (QFT)
- The Graduated Approach
- Universal Design for Learning (UDL)
- Evidence based interventions
- Attainment not ability...
...challenging ability groupings
- Teacher is responsible for ALL
- Teacher works with ALL pupils
- Teaching Assistant (TA) supports the learning of ALL
- Differentiation by resources, support, or task
- Child at the centre—pupil profile
- Talk to parents
- Waves of support

Starting with QFT



4. Review

1. Assess

SEND Code of Practice
SEN Support
in Schools:
The Graduated Approach

3. Do

2. Plan

Diversity & Inclusion

